

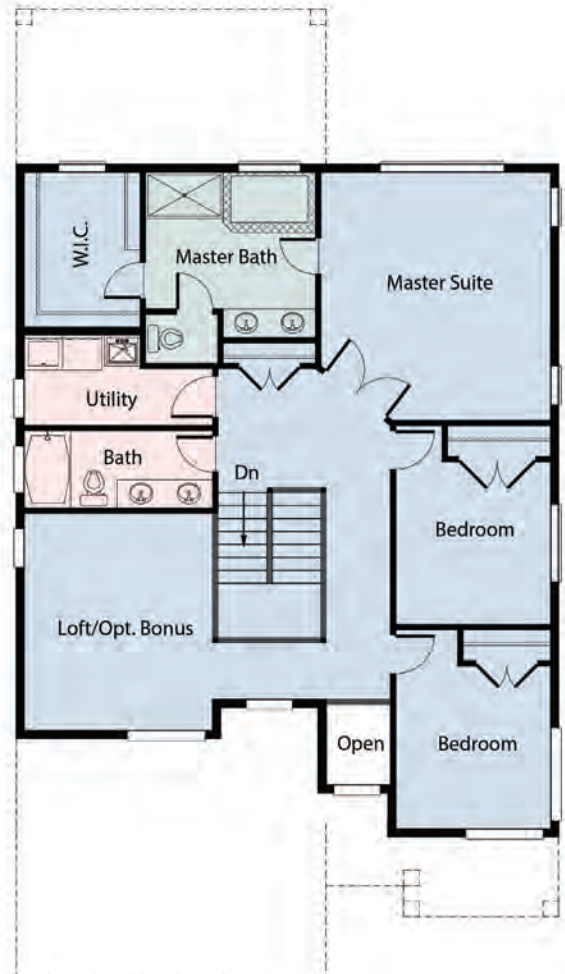
# Sitka

Observation Ridge

3-5 Bed / 2.5-2.75 Bath 2,512 Sq. Ft.



Opt. 3/4 Bath



Elevation A

Nothing contained herein shall be deemed as a warranty of the accuracy of the information as set forth. All square footages shown are approximate. Square footage shown may differ from square footage in public offering statement. Model furnishings not included.



# Sitka

Observation Ridge

3-5 Bed / 2.5-2.75 Bath 2,512 Sq. Ft.



Sitka A



Sitka B

The Sitka is one of our most versatile homes, catering to a variety of different lifestyles. The layout includes three bedrooms and the option for a fourth on the main floor with a 3/4 bath. A spacious great room flows into the kitchen and dining space with an oversized sliding door leading out to the covered patio and backyard. Add in a bonus room and a den, and The Sitka is the complete package.

## Sitka Features:

- An abundance of oversized designer windows
- A large, covered entry and back patio with gas fireplace and 12' slider
- A den and bonus loft, which can be optional main floor and additional upstairs bedrooms
- 9' ceilings on the 2nd floor
- A grand chef's kitchen with walk-in pantry and 9' island
- A luxurious master suite with walk-in closet and 5-piece bath
- A utility room upstairs
- A 2-car garage
- A modern 8', full-lite entry door and horizontal or vertical lite garage door (per plan)
- A mudroom
- Extensive exterior masonry and durable cedar-look accents
- Optional, extra-durable, black vinyl-wrapped windows (per color scheme)
- Greenbelt and mountain view locations available

## SITKA HOMESITES

