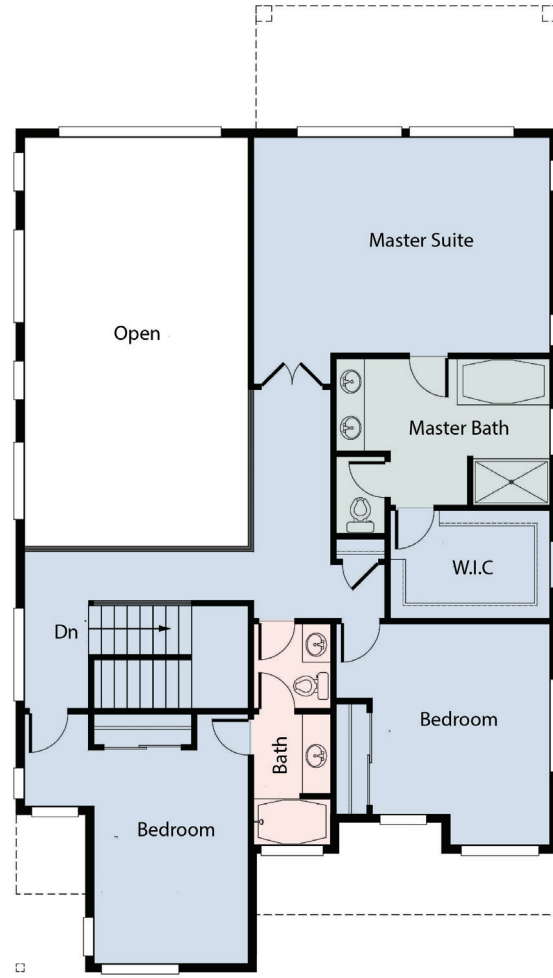
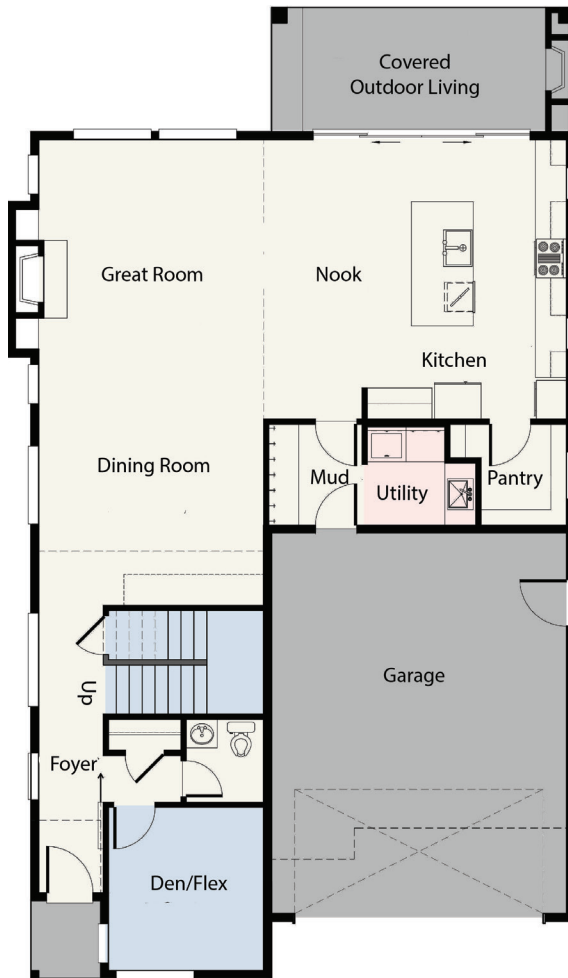


Pacific

Observation Ridge

3 Bed / 2.5 Bath 2,545 Sq. Ft.



Elevation A

Nothing contained herein shall be deemed as a warranty of the accuracy of the information as set forth. All square footages shown are approximate. Square footage shown may differ from square footage in public offering statement. Model furnishings not included.



Pacific

Observation Ridge

3 Bed / 2.5 Bath 2,545 Sq. Ft.



Pacific A



Pacific B

To say the Pacific plan “brings the outside in” is an understatement. In addition to the huge windows and 9-foot tall ceilings on the 2nd floor, this plan also boasts a two-story ceiling in the great room and dining room. Upstairs, a third bedroom includes direct on-suite access and there is even an enclosed, private den on the main when it’s time to get work done.

Pacific Features:

- A soaring, two-story ceiling over the dining and great rooms
- An abundance of oversized designer windows
- A large, covered entry and back patio with gas fireplace
- A main floor den / flex room
- 9’ ceilings on the 2nd floor
- A grand chef’s kitchen with walk-in pantry, 9’ island and breakfast nook
- A luxurious master suite with walk-in closet and 5-piece bath
- A shared on-suite in Bedroom 3
- A 2-car garage
- A modern 8’, full-lite entry door and horizontal, or vertical, lite garage door (per plan)
- A mudroom
- Extensive exterior masonry and durable cedar-look accents
- Optional, extra-durable, black vinyl-wrapped windows (per color scheme)
- Greenbelt and mountain view locations available

PACIFIC HOMESITES

