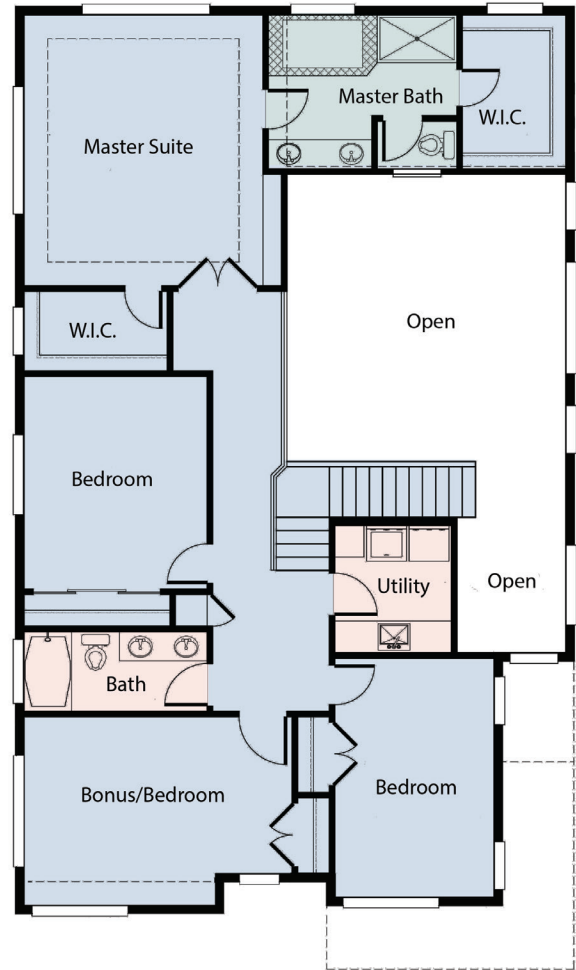
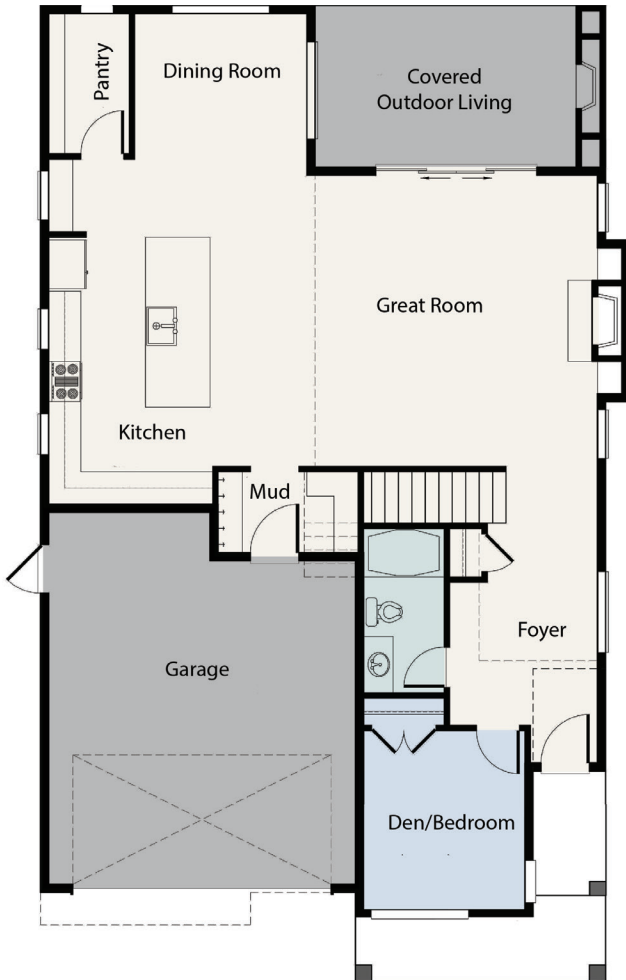


Westwood

Observation Ridge

4-5 Bed / 3 Bath 2,738 Sq. Ft.



Elevation A

Nothing contained herein shall be deemed as a warranty of the accuracy of the information as set forth. All square footages shown are approximate. Square footage shown may differ from square footage in public offering statement. Model furnishings not included.



Westwood

Observation Ridge

4-5 Bed / 3 Bath 2,738 Sq. Ft.



Westwood A



Westwood B

The Westwood has a special appeal to those who love a big master suite, and this one even includes two walk-in closets. It is also a perfect home for entertaining, with a dramatic two-story great room ceiling, dining room and even a main-floor guest bedroom with a full bathroom. The upstairs can either be the home for a bonus room, or a 4th bedroom.

Westwood Features:

- A soaring, two-story ceiling over the great room
- Extra large bedrooms throughout
- An abundance of oversized designer windows
- A large, covered entry and back patio with gas fireplace
- 9' ceilings on the 2nd floor
- A grand chef's kitchen with walk-in pantry and 10' island
- A formal dining room
- A luxurious master suite with dual walk-in closets and 5-piece bath
- A main floor den or guest room
- An optional bonus room with closet
- A utility room upstairs
- A modern 8', full-lite entry door and horizontal, or vertical, lite garage door (per plan)
- A mudroom
- Extensive exterior masonry and durable cedar-look accents
- Optional, extra-durable, black vinyl-wrapped windows (per color scheme)
- Greenbelt and mountain view locations available

WESTWOOD HOMESITES

